A photograph showing a person's leg in black leggings and a hand reaching towards a wine glass. The floor is covered with many wine glasses, some containing red wine, arranged in rows. The background is a plain, light-colored wall.

Stefano Pirovano
creative director

products & interior



ALESSI





ALESSI



ALESSI





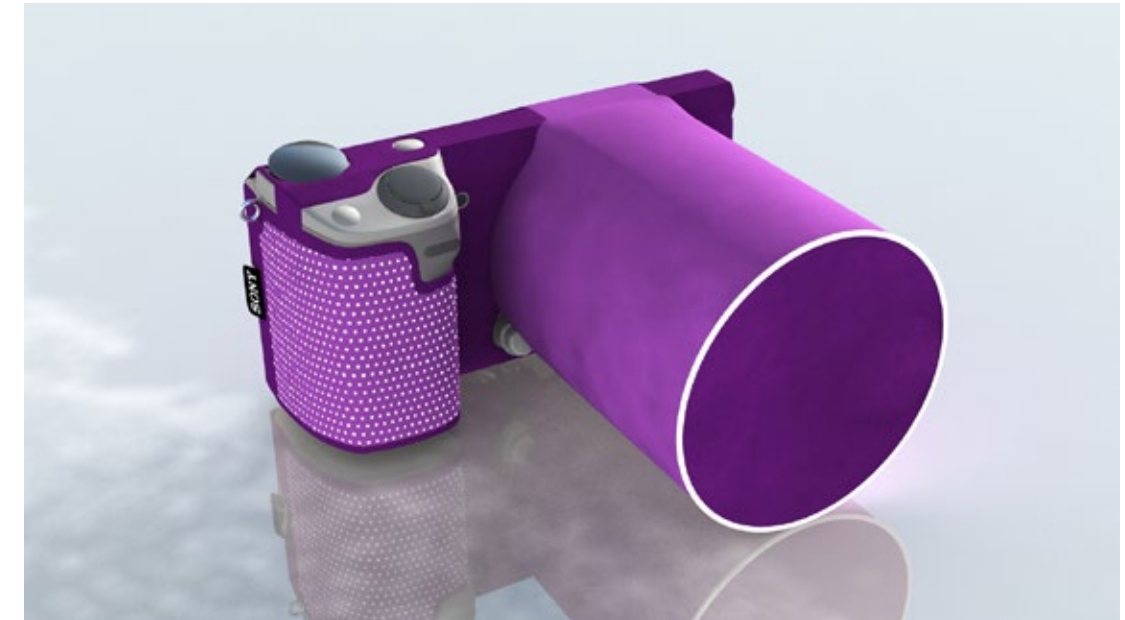
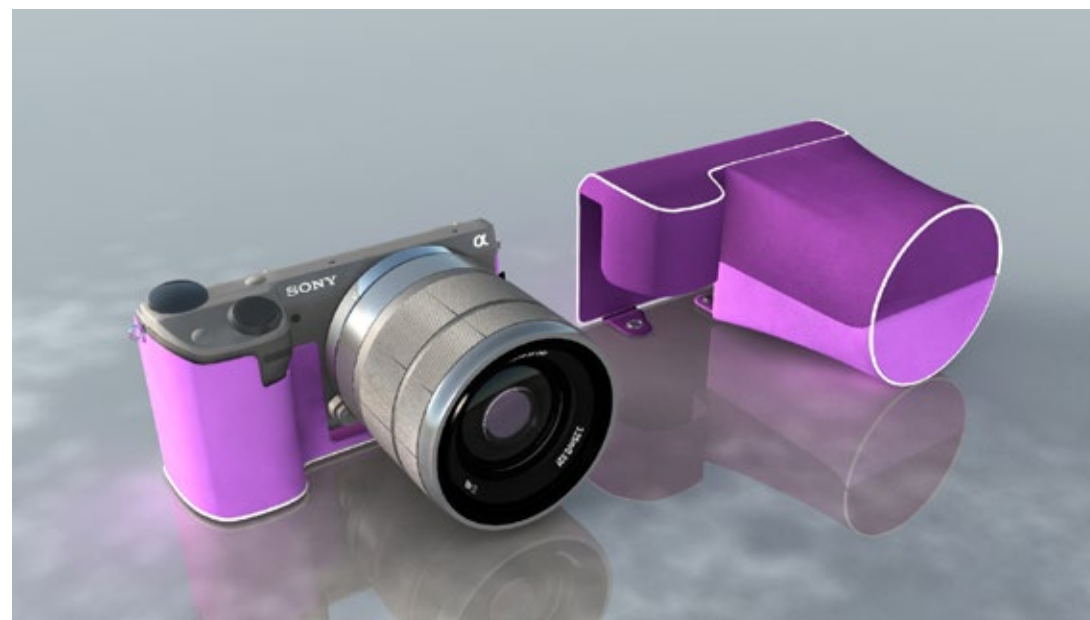
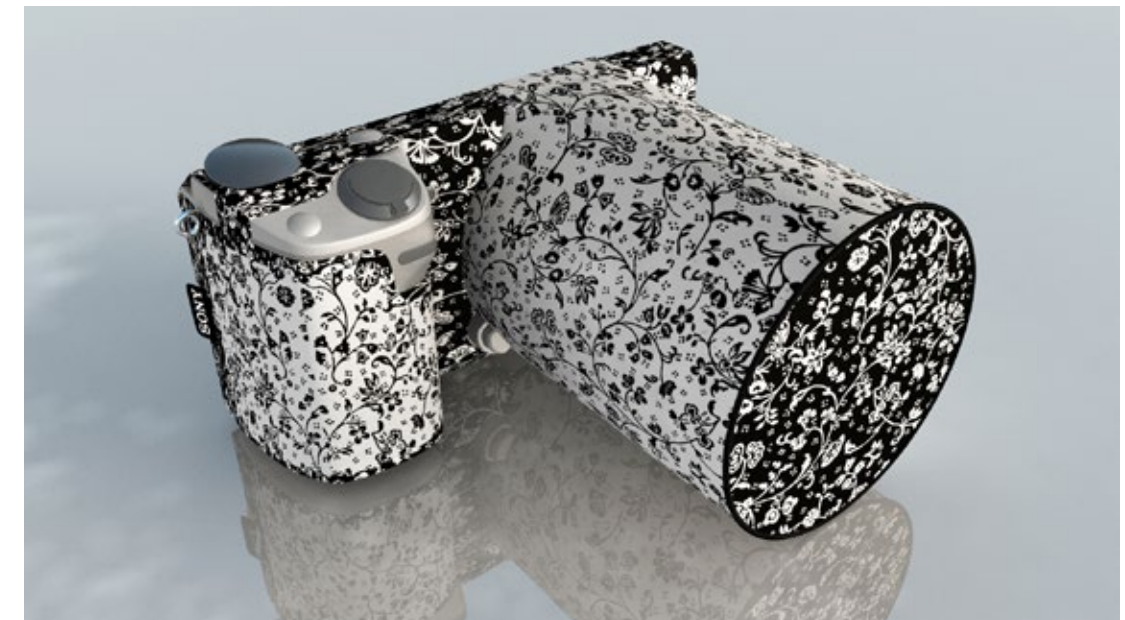
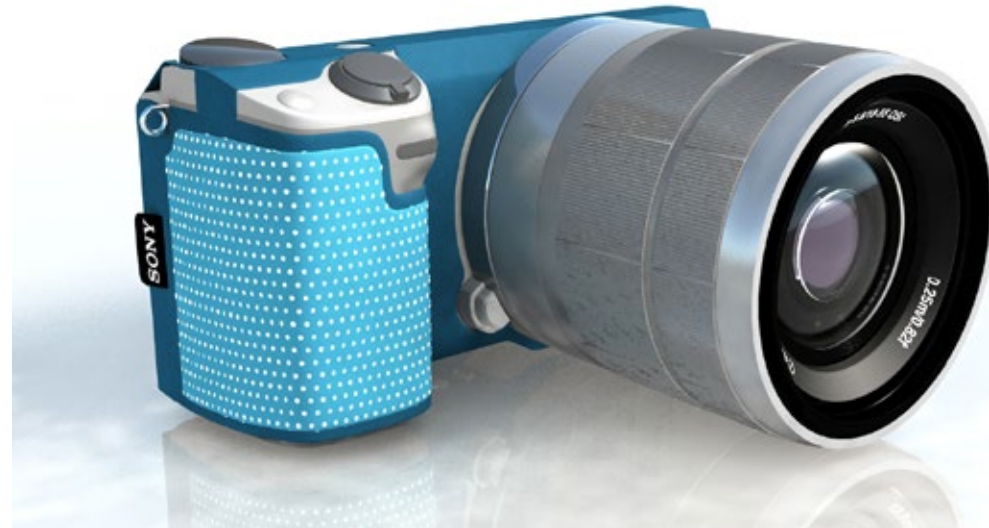
swatch[®] 





ALCANTARA

Inspirational design development



ALCANTARA

Inspirational design development



ALCANTARA

Inspirational design development





BYSTEEL

100% MADE IN ITALY FABBRICA DI PROGETTI





BYSTEEL
100% MADE IN ITALY FABBRICA DI PROGETTI



BYSTEEL
100% MADE IN ITALY FABBRICA DI PROGETTI









PERRI
TREVISO



PERRI
TREVISO





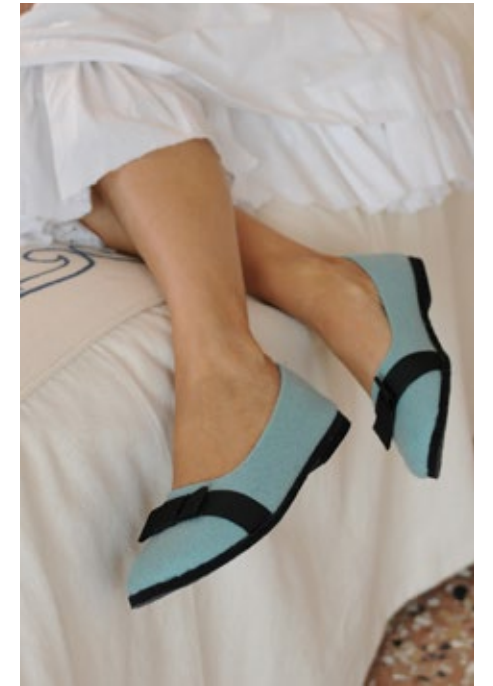
havaianas



SLAMP
CONTEMPORARY LIGHT & IKONS



Toffole





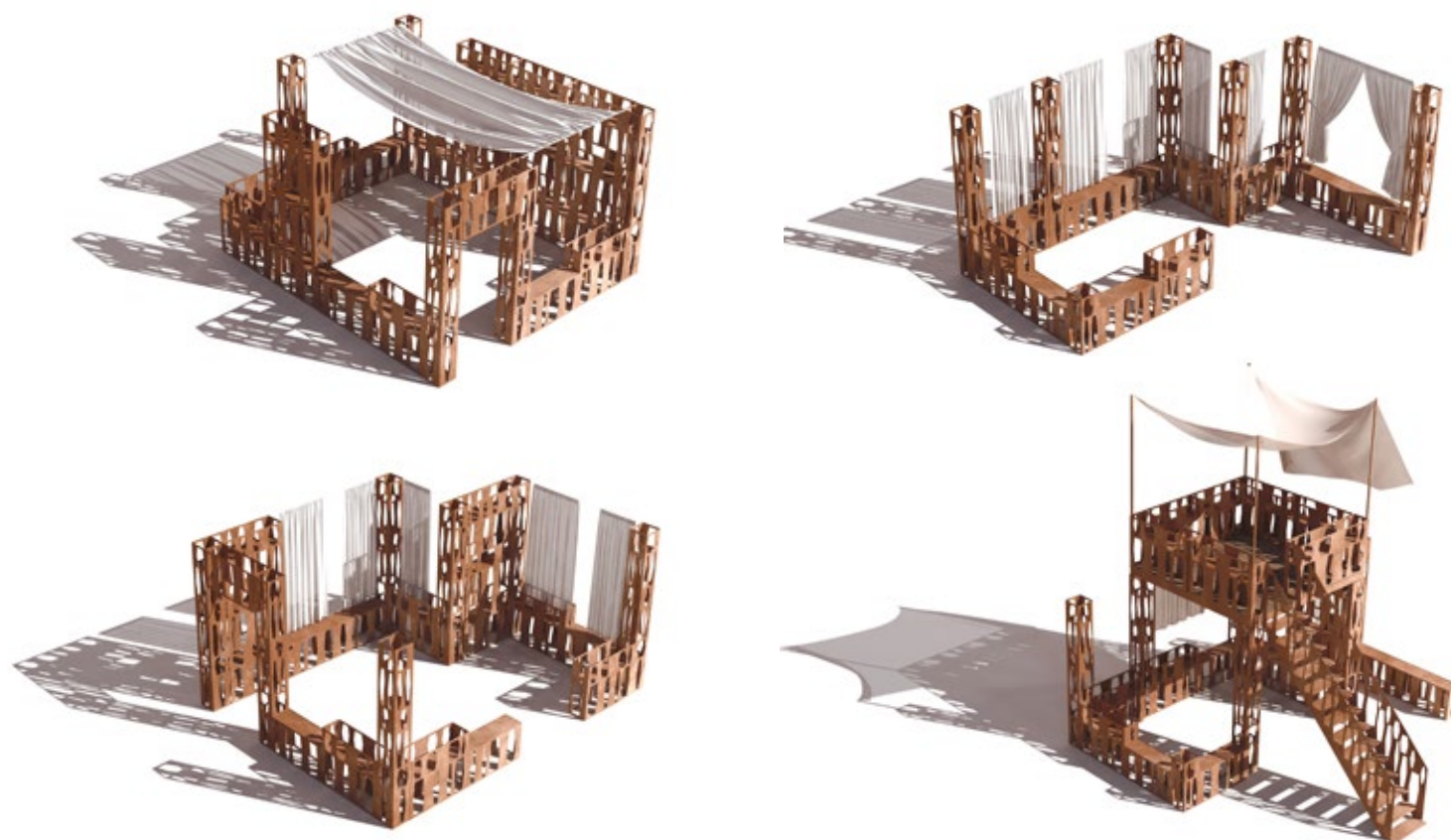
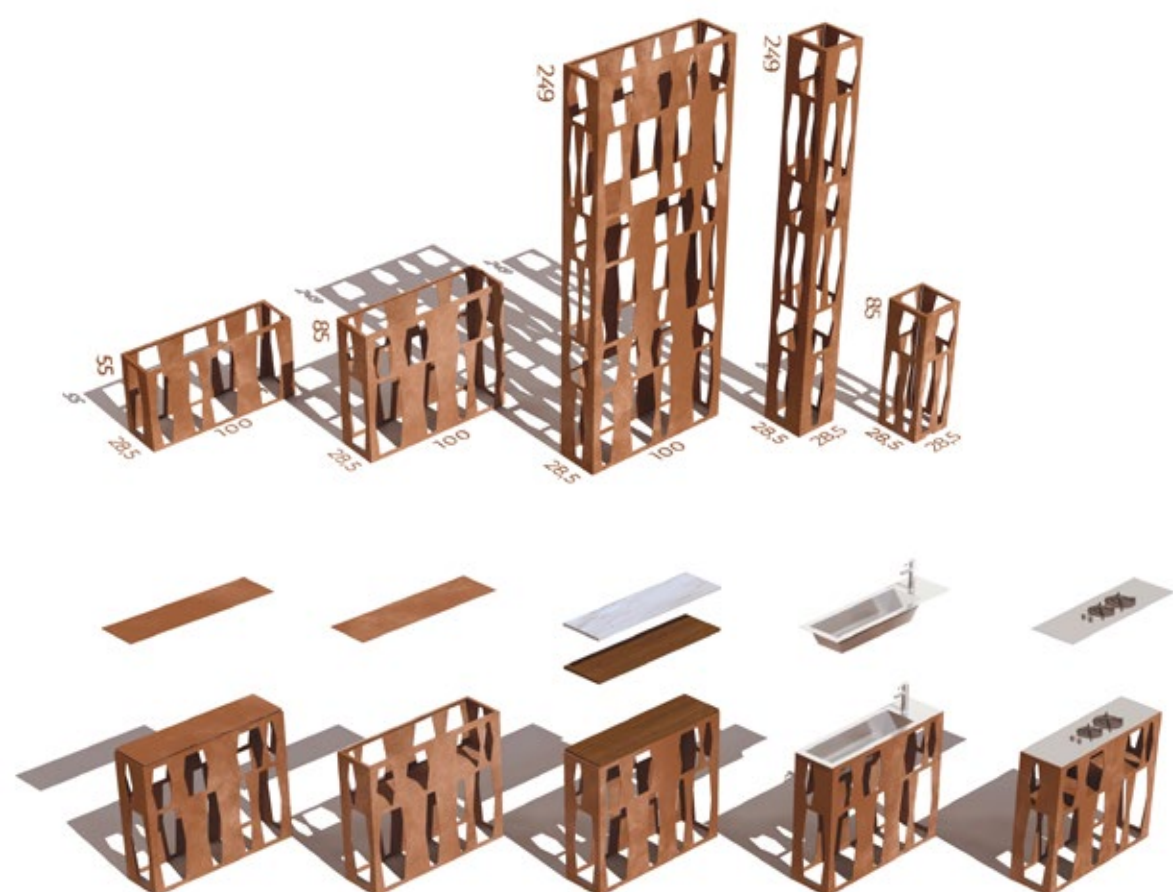
**REGINA
REGIS
RAIN** 

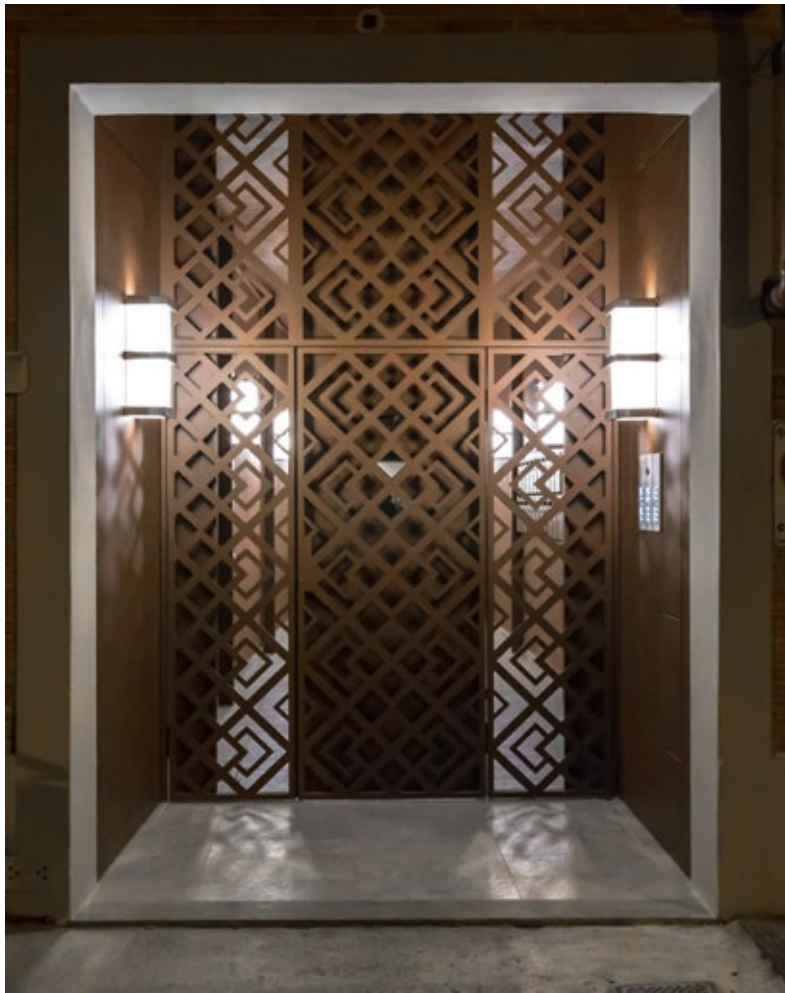




STEELUS

INDOOR & OUTDOOR EMOTIONAL DESIGN





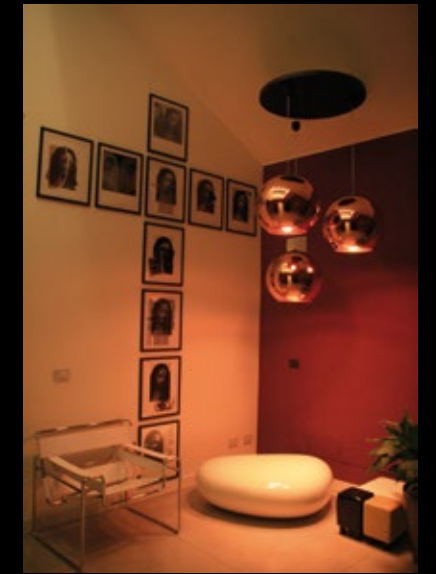









cavalli club
firenze
interior restyling



frankie morello®
MILAN